

Lichfield District Council

Pay Policy Statement 2022

Introduction and purpose

Under section 112 of the Local Government Act 1972, Lichfield District Council (LDC) has the 'power to appoint officers on such reasonable terms and conditions as the authority thinks fit'.

This Pay Policy Statement (the 'statement') sets out LDC's approach to its pay, terms and conditions and other related matters in accordance with the requirements of Section 38 of the Localism Act 2011.

Once approved by full Council, this Pay Policy Statement will come into immediate effect and will be subject to review on an annual basis, in accordance with the relevant legislation prevailing at that time.

Lichfield District Council

Lichfield District Council employs 329 staff (as at 15/02/2022), excluding casual workers, contractors, and agency workers) and provides a wide range of services managed through the Chief Executive's, a Chief Operating Officer, an Interim Director of Regeneration and other key service areas ; The Chief Executive and 4 Heads of Service are currently permanent roles within the structure. The Chief Operating Officer, Interim Regeneration Director and Programme Director are currently temporary posts. A new structure is being developed as part of our Being a Better Council programme, which is expected to be consulted on in place by summer 2022 affecting all posts except the Chief Executive.

The Chief Executive

The Chief Executive leads the organisation by translating members' aspirations into practical solutions and delivery. They also:

- Act as lead advisor to Elected Members
- Undertake the statutory role of Head of Paid Service and Returning Officer
- Lead and support LDC's governance arrangements
- Manage direct reports from the Leadership team and key service areas including:
 - Supporting strategic partnerships focusing on green matters including Cannock Chase AONB and managing the council's countryside assets, arboriculture services, countryside, biodiversity, rural strategy and planning.
 - Sustainable development, planning policy, development plans and implementation, development control and enforcement, urban design and conservation, building control and land charges.
 - Corporate Communications, consultation and marketing

Chief Operating Officer (temporary)

This role takes the strategic lead on

- Governance, legal and member services.
- Electoral services, management of elections and the electoral register.
- Corporate lead on health and safety, insurance and equalities.
- Human resources, organisational development and performance management.
- Customer complaints, ombudsman investigations, Data Protection, Freedom of Information, RIPA and MP enquiries.
- Corporate ICT Service provision.

Programme Director (contractor)

This role takes the strategic lead on

- Programme management for Being a Better Council and corporate projects

Interim Regeneration Director (contractor)

This role area takes the strategic lead on

- Inward investment and developing the economy, business support and partnerships, and tourism.
- Car parking strategy, city centre closed circuit television and management of off street parking enforcement.
- Sustainable economic development, city and town centre regeneration and development.

Head of Corporate Services

This HOS area takes the strategic lead on

- Development & maintenance of corporate information systems, including geographical information systems (GIS), the Property Gazetteer, street naming and numbering.
- Provision of corporate customer services (Lichfield Connects).
- Digitisation and transformation projects including web and digital channels, data analysis and RPA for Being a Better Council.

Head of Operational Services

This role takes the strategic lead on

- Physical Activity and Sport Development partnerships, outdoor sports and play provision and the management of parks and open spaces, including Beacon Park.
- Management of leisure centre and theatre contracts.
- Quality of the local environment and the delivery of in-house street scene services, including street cleansing and fly-tipping, abandoned vehicles, fleet management, grounds maintenance, public conveniences, and shop mobility.
- The Joint Waste service, with Chief Executive of Tamworth Borough Council in respect of waste collection and recycling, sustainable waste management, including partnership support, environmental education and awareness.

Head of Regulatory Services, Housing & Wellbeing

This role takes the strategic lead on

- Housing, including housing need and investment and affordable housing planning and development. Lead on housing partnerships, housing with support and travelling families.
- Homelessness strategy and responsibilities, including private sector housing investment and regulation.
- Enforcement and regulation, including contaminated land, pollution, nuisance, air quality.
- Health and safety enforcement and regulation, including food safety, occupational health and safety, infectious disease.
- Public health and protection, including taxi, liquor and miscellaneous licensing. Lead on community regeneration and development, including building social capital.
- Links with the voluntary sector; grant aid and commissioning grant funded services. Safer and Stronger communities including the Community Safety Partnership
- Emergency planning, with business continuity in conjunction with Staffordshire Civil Contingencies Unit.
- Lead on older people, children and young people and safeguarding policy.

Head of Finance and Procurement

This role takes the strategic lead on

- Anti-fraud policy and awareness
- Internal/ External audit and risk management
- Financial probity, strategic financial management, treasury and investment funds, and revenue and capital strategy.
- Management of accounts and reconciliation and the management of external funding.
- Procurement strategy, policy and implementation.
- Assets, premises, facilities management and the council's property portfolio.
- Administration and collection of local taxation, including council tax and business rates (NNDR), housing benefits and council tax reductions, arrears collection for council tax, business rates, benefits overpayments and sundry debts.
- Policy development on debt recovery and its management.

2. Legislative framework

In determining the pay and remuneration of its employees, LDC will comply with all relevant employment legislation. This includes the Employment Act 2002, Equality Act 2010, Part Time Employment (Prevention of Less Favourable Treatment) Regulations 2000, Fixed-Term Employees Regulations (Prevention of Less Favourable Treatment) 2002, The Agency Workers Regulations 2010, [National Living Wage](#) and where relevant, the Transfer of Undertakings (Protection of Earnings) Regulations 2006 (TUPE), and the Employment Rights Act 1996.

With regard to the Equal Pay requirements contained within the Equality Act, the council ensures there is no pay discrimination within its pay structures and that all pay differentials can be objectively justified through the use of equality proofed job evaluation mechanisms, which directly relate salaries to the requirements, demands and responsibilities of the role.

LDC also complies with the Equality Act 2010 (Specific Duties and Public Authorities) Regulations 2017 which require public sector employers with 250 or more employees to publish their gender pay gap information.

3. Pay structure

The underpinning mechanism in delivering LDC's pay structure is LDC's job evaluation system and the Single Status Agreement for all staff covered by the [National Joint Council](#) negotiations. This ensures all employees (except Chief Officers) are rewarded according to the demands and responsibilities of their job and that there are no discriminatory elements.

The posts of the majority of employees have been assessed using a National Joint Council for Local Government Services job evaluation scheme and which is supported by both the national trade unions and LDC employees.

The Single Status Agreement ensures that there is consistency and fairness in its terms and conditions, including pay that the council offers to its employees. The grades of Chief Officers have been evaluated through the Hay Job evaluation process and are subject to the terms agreed by the [Joint Negotiating Council](#), although our single status agreement extends to cover Heads of Services for all other benefits outside of pay.

Any changes to jobs or new jobs go through a job evaluation process to ensure that there is consistency and fairness in place. Based on the application of the job evaluation process, the council uses the nationally negotiated pay scale as the basis for its local grading structure. **Appendix 1** shows the Lichfield District Council NJC pay grades applicable from April 2021 (as agreed in March 2022) as the pay award for April 2022 is yet to be negotiated and settled.

The Local Government Association (LGA) represents LDC in national pay negotiations with trade unions and the government over pay and conditions.

In determining its grading structure and setting remuneration levels for all posts, LDC also takes into account the need to ensure value for money in respect of the use of public funds and affordability balanced against the need to recruit and retain employees who are able to meet the requirements of their respective roles, and provide timely high quality services to the community, delivered effectively and efficiently.

New appointments will be made at the relevant rate to ensure the best candidate is secured and wherever possible this should be the lowest scale point within the grade. If an internal candidate is appointed on promotion then as a point of principle, they should be offered the next available rate within the grade as a minimum and where a grade overlaps they should be offered the role on a point on the scale which ensures remuneration for the additional responsibility of the new role.

From time to time it may be necessary to take account of the external pay market in order to attract and retain employees with particular experience, skills and capacity. Where necessary, LDC will ensure the requirement for such is objectively justified by reference to clear and transparent evidence of relevant market comparators, using appropriate data sources available from within and outside the local government sector. This is known as a 'market supplement'.

Where appropriate a shared service payment may also be made to an officer who is managing a service on behalf of another council.

Local and Dangerous Building Allowances are paid as a contractual obligation following a TUPE transfer. Other TUPE rates are paid as a result of TUPE transfers.

In addition we have an *Acting up Recognition Policy* (payment of an Honorarium), where a lower graded employee may be asked to take on the duties of a higher graded post, due to vacancy or other absence, where the employee possesses the appropriate skills and is agreeable to do so. At the time of writing this report there are currently 2 honorarium payments in place.

Payments for the *Deputy Monitoring Officer* and *Deputy Section 151 Officer* are also paid as a supplement to officers who sit outside of the senior leadership team or interim roles for their additional responsibilities in carrying out statutory functions.

All other pay related allowances are the subject to either nationally or locally negotiated rates, having been determined from time to time in accordance with collective bargaining machinery and/or as determined by council policy. This includes a *telephone allowance*, payable to officers who are required to use their home phone for work purposes.

Essential user car allowance is £80.25 or £70.50 per month dependent on the size of vehicle. These rates are applicable to all employees who are essential car users. There are currently 87 employees receiving an essential car user's allowance.

Current details of 'additional pay' which are chargeable to UK Income Tax and do not solely constitute reimbursement of expenses incurred in the fulfilment of duties, are set out below:

Table 1 - Additional Payments

Additional Payment	Numbers	Pay range FTE Per annum £
Shared Service Payment	1	3528
Market Supplement Payments	5	2500-5767
Deputy Monitoring and Deputy Section 151 Officers	2	2942-3038
Essential car allowance	80	846-1239
Telephone Allowance	8	117-124
Dangerous Building Allowance	2	2722-2815
Relocation Allowance	1	12000

Apprenticeships

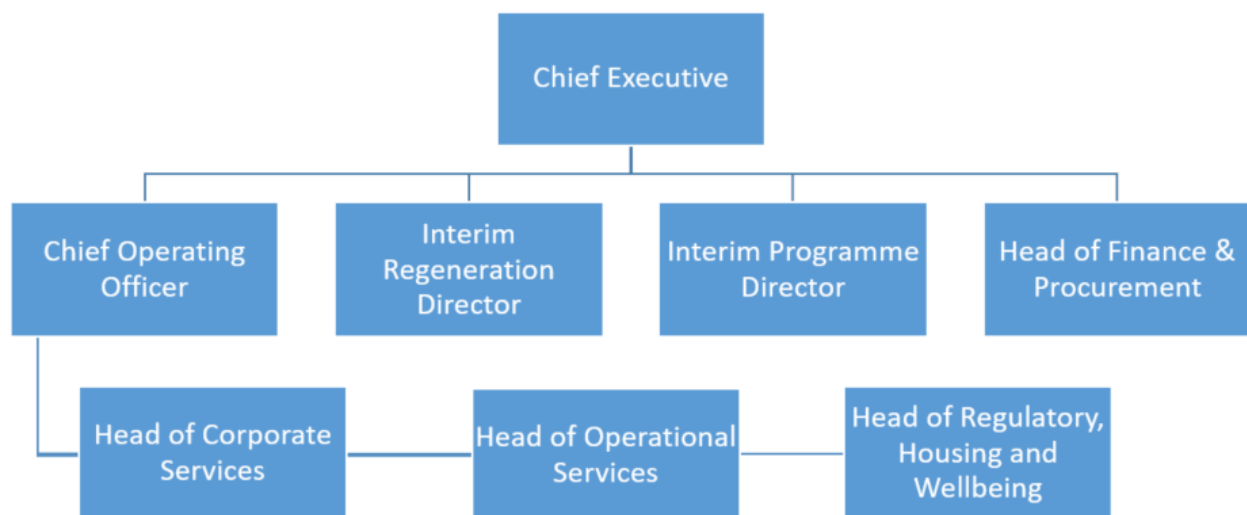
Under the Enterprise Act 2016, <https://www.gov.uk/government/news/enterprise-act-becomes-law> we are encouraged to appoint apprentices and public sector bodies are required to have up to 2.3% of their workforce in an apprenticeship annually. Currently we have 6 positions accessing the apprenticeship levy funding.

In addition, our aim is to recruit 8 new apprentices during 2022/23. A one off reserve has been set up to fund additional apprentices in targeted areas. In addition, all vacancies will be considered by relevant Chief Officers to ensure that opportunities for different ways of working are explored, that we have considered if the vacant post can be filled by an apprentice, and that appointments are made on the most appropriate basis and only when essential to ongoing service delivery. Many of our employees undertaking apprenticeships are paid within our normal pay scales but where appropriate we pay new recruits to an apprenticeship in line with the [National Apprenticeship rates](#).

4. Definition of a Chief Officer

Section 43 of the Localism Act 2011 defines the meaning of a Chief Officer and refers to the Local Government and Housing Act 1989. Statutorily the Chief Officer at LDC is currently the Chief Executive and locally LDC has extended the definition of a Chief Officer to include the Chief Executive, Chief Operating Officer and all Heads of Service.

The Chief Officers' Structure, including temporary vacancies currently filled by contractors, is as follows:



Under transparency regulations we also publish data of any officer where a full time equivalent salary is at least £50,000 even though they do not fall within the definition of Chief Officer.

5. Chief Officers' remuneration

Chief Executive

The Chief Executive salary falls within a range of four incremental points between £113,469, rising to a maximum of £120,347, not inclusive of any payment for Returning Officer duties, with the exception of District and Parish elections, payment for which is included in the salary.

Chief Operating Officer/ Director

This sits within the banding previously set out for Directors within the structure with five incremental points ranging from £85,480 to £90,412.

Heads of Service (HoS)

The Heads of Service posts report to the Chief Executive via the Chief Operating Officer and are evaluated using the Hay Job Evaluation system. These officers are paid a salary in a range of five incremental points between £60,423 and £65,916. Some of these posts may be eligible for additional payments as specified in section 3.

Assistant Directors (ADs)

These are new pay bandings not currently used but likely to be introduced as part of the introduction of the target operating model to deliver Being a Better Council by the summer 2022. The new bandings for Assistant Directors range from £72,063 to £79,290.

Other pay additions

In addition to basic salary, described below are details of other elements of 'additional pay' which are chargeable to UK Income Tax and do not solely constitute reimbursement of expenses incurred in the fulfilment of duties:

Fees paid for Returning Officer duties where identified and paid separately. This applies solely to the Chief Executive and their deputies and relates to fees, which are set by the Government for Parliamentary elections and through agreement with Staffordshire County Council, for County Council elections, using a pence per elector for the calculation. Fees for the district and parish local elections are included in the Chief Executive salary level.

6. Payments on termination

LDC's approach to statutory and discretionary payments on termination of employment of chief officers, prior to reaching normal retirement age, is set out within its policy statement in accordance with Regulations 5 and 6 of the Local Government (Early Termination of Employment), (Discretionary Compensation) Regulations 2006 and Regulations 12 and 13 of the Local Government Pension Scheme (Benefits, Membership and Contribution) Regulations 2007.

The details of payments are set out in LDC's Discretionary Payment Policy. These policies apply equally to all LDC employees.

7. Lowest paid employees

The lowest paid people employed under a contract of employment with LDC would be employed on a full time [37 hours] equivalent salary, set at the minimum pay point currently in use within LDC's grading structure (see **Appendix 1**) £9.50 per hour from 1 April 2022.

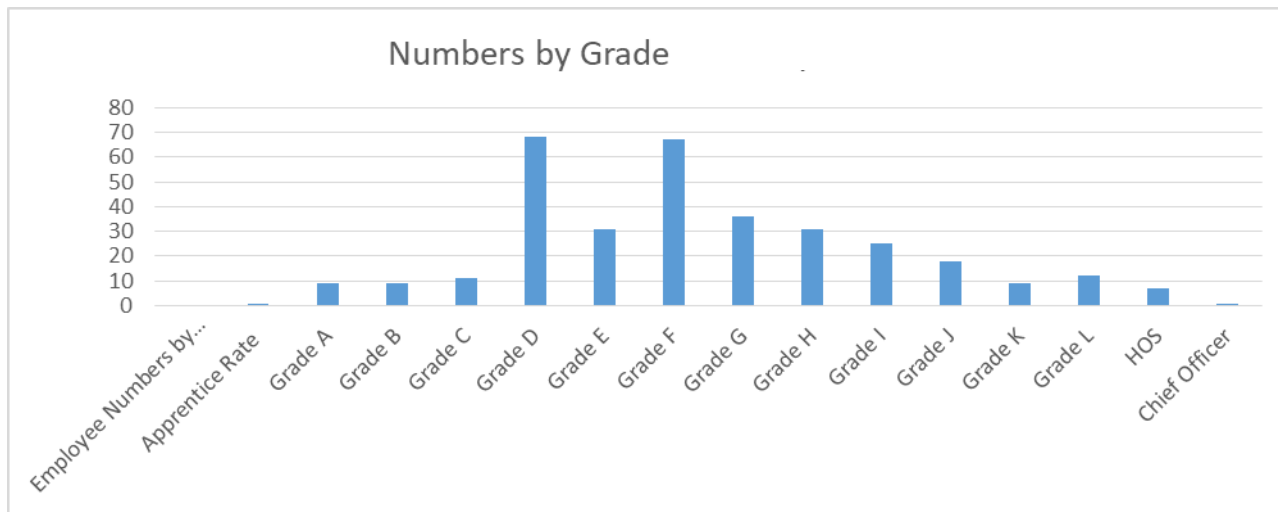
LDC employs apprentices who are not included in the definition of 'lowest paid employees' as the terms and conditions are determined by the National Apprenticeship Services.

8. Pay relationship

The relationship between the rate of pay for the lowest paid and chief officers is determined by the processes used for determining pay and grading structures as set out earlier in this policy statement.

The statutory guidance under the Localism Act recommends the use of pay multiples as a means of measuring the relationship between pay rates across the workforce, and that of senior managers. This is detailed in the Hutton 'Review of Fair Pay in the Public Sector' (2010). The Hutton Report explored the case for a fixed limit on dispersion of pay through a requirement that **no public sector manager can earn more than 20 times the salary of the lowest paid person** in the organisation. The report concluded that the relationship to median earnings was a more relevant measure, and the Government's Code of Recommended Practice on Data Transparency recommends the publication of the ratio between highest paid salary and the median average salary of the whole of the authority's workforce.

The graph below shows the relationship numbers of staff on the different pay grades within LDC:



The current pay levels within LDC define the multiple between:

- the lowest paid (full time equivalent) employee and the Chief Executive ratio is **1 to 6.56**
- the lowest paid employee and median average chief officer is **1 to 3.66**.
- the median average full time equivalent earnings and the Chief Executive is **1 to 4.64**,
- the median average full time equivalent earnings and median average chief officer is **1 to 2.71**

All companies employing more than 250 staff must publish their pay relationship from this year <https://www.gov.uk/government/news/uks-biggest-firms-will-have-to-justify-pay-gap-between-bosses-and-their-workers>.

As part of its overall and ongoing monitoring of alignment with external pay markets, both within and outside the sector, LDC uses available benchmark information as appropriate.

9. Publication

Upon approval by Full Council, this statement will be published on LDC's website. In addition, for posts where the full time equivalent salary is at least £50,000, LDC's Annual Statement of Accounts will include a note setting out the total amount of:

- salary, fees or allowances paid to, or receivable, by the person in the current and previous year.
- any bonuses paid or receivable by the person in the current and previous year.
- any sums payable by way of expenses allowance that are chargeable to UK income tax.
- any compensation for loss of employment and any other payments connected with termination.
- any benefits received that do not fall within the above.

This policy and (Appendix 1) will be updated and republished once a final settlement to the 2022 Pay Negotiations is agreed later in the year.

10. Accountability and decision making

In accordance with the constitution of LDC, the Employment Committee is responsible to LDC for functions relating to employment matters including establishing the overall framework for remuneration and terms and conditions of employment.

Appendix 1

Lichfield District Council - Pay Rates April 2021 - March 2022

* National Joint Council for Local Government Services - 1.75% effective from 01/04/2021

BAND A	ANNUAL	HR
1	18333	9.50

BAND B		
1	18333	9.50
2	18516	9.60
3	18887	9.79

BAND C		
3	18887	9.79
4	19264	9.99
5	19650	10.19

BAND D		
5	19650	10.19
6	20043	10.39
7	20444	10.60

BAND E		
7	20444	10.60
8	20852	10.81
9	21269	11.02
10	21695	11.25
11	22129	11.47
12	22571	11.70

BAND F		
14	23484	12.17
15	23953	12.42
16	24432	12.66
17	24920	12.92
18	25419	13.18
19	25927	13.44

National Living Wage and National Minimum Wage

Age Range	01-Apr-22
23+	9.50
21 - 22	9.18
18 - 20	6.83
under 18	4.81
Apprentice *	4.81

* Apprentice Rate - under 19 or 19 and over and in the first year of their apprenticeship:

BAND G	ANNUAL	HR
19	25927	13.44
20	26446	13.71
21	26975	13.98
22	27514	14.26
23	28226	14.63
24	29174	15.12

BAND H		
24	29174	15.12
25	30095	15.60
26	30984	16.06
27	31895	16.53
28	32798	17.00

BAND I		
28	32798	17.00
29	33486	17.36
30	34373	17.82
31	35336	18.32
32	36371	18.85

BAND J		
32	36371	18.85
33	37568	19.47
34	38553	19.98
35	39571	20.51

BAND K		
35	39571	20.51
36	40578	21.03
37	41591	21.56
38	42614	22.09
39	43570	22.58

BAND L		
39	43570	22.58
40	44624	23.13
41	45648	23.66
42	46662	24.19
43	47665	24.71

COACH

Level 1	Asst Coach (UnQ)	9.50
Level 2	Coach (Qu)	12.62
Level 3	Senior Coach	15.06
Level 4	Advanced Coach	18.08

Senior Pay Bandings

Descriptor	Code	SCP	£ - salary	£- hourly
MANAGING OFFICER	M	44	48562	25.26
MANAGING OFFICER	M	45	49577	25.78
MANAGING OFFICER	M	46	50613	26.32
MANAGING OFFICER	M	47	51538	26.80
MANAGING OFFICER	M	48	52591	27.35
MANAGING OFFICER	M	49	53653	27.90
MANAGING OFFICER	M	50	54723	28.46
MANAGING OFFICER	HOS	HOS1	60423	31.32
MANAGING OFFICER	HOS	HOS2	61796	32.03
MANAGING OFFICER	HOS	HOS3	63168	32.74
MANAGING OFFICER	HOS	HOS4	64542	33.45
MANAGING OFFICER	HOS	HOS5	65916	34.17
ASSISTANT DIRECTOR	AD	AD1	72063	37.44
ASSISTANT DIRECTOR	AD	AD2	73704	38.30
ASSISTANT DIRECTOR	AD	AD3	75543	39.25
ASSISTANT DIRECTOR	AD	AD4	77386	40.21
ASSISTANT DIRECTOR	AD	AD5	79230	41.17
DIRECTOR	DD	DIR1	85480	44.42
DIRECTOR	DCOO	DCOO	86236	44.70
DIRECTOR	DD	DIR2	87124	45.27
DIRECTOR	DD	DIR2	88768	46.12
DIRECTOR	DD	DIR4	90412	46.98
CHIEF EXECUTIVE	CE	CEX1	113469	58.96
CHIEF EXECUTIVE	CE	CEX2	115767	60.15
CHIEF EXECUTIVE	CE	CEX3	118062	61.35
CHIEF EXECUTIVE	CE	CEX4	120347	62.53